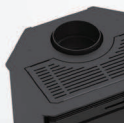


ARESTA 380

Fits perfectly into tight spaces

FEATURES

FITS PERFECTLY INTO TIGHT SPACES



ASHES COLLECTION SYSTEM



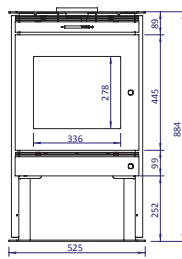
SAFE AND SECURE LOCK FOR BEST THICKNESS



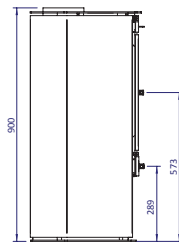
INTERIOR COATED BOX FOR LONGER USEFUL LIFE AND A BETTER COMBUSTION



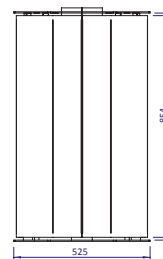
MEASURES



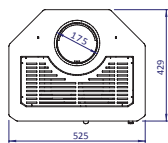
FRONT VIEW



SIDE VIEW










BACK VIEW



TOP VIEW

Note:
Measures in mm.

-  POWER: 11 kW
9.458,3 Kcal/h
-  EFFICIENCY: Under testing
-  HEATING RANGE: Up to 180 m² ¹
1.938 sq ft
-  MEASUREMENTS: High 33,60"
Width 20,70"
Depth 16,90"
-  WEIGHT: 176,40 lbs
-  FLUE DIAMETER: 6"
-  BAFFLE: Stainless steel

(1) Estimated average for housing in Chile.